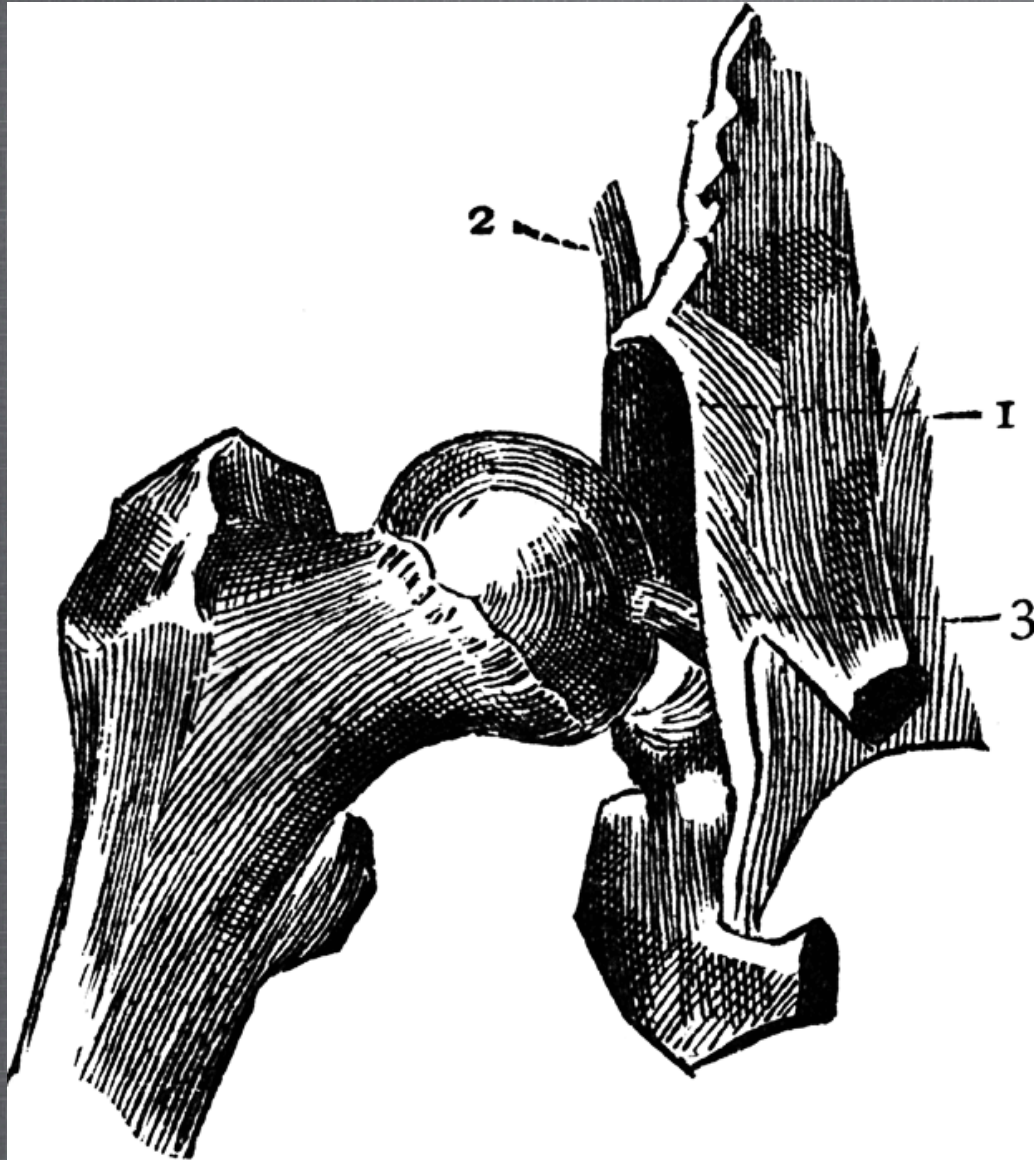


- **Hip Connections**  
Advanced Concepts:  
Stability, Support and Power



• madelineBLACK

Workshops - CEC Provider [www.Madelineblack.us](http://www.Madelineblack.us)



- **Joint Surface**  
Ball and Socket

Concave Acetabulum

Convex Femoral Head

● m a d e l i n e B L A C K

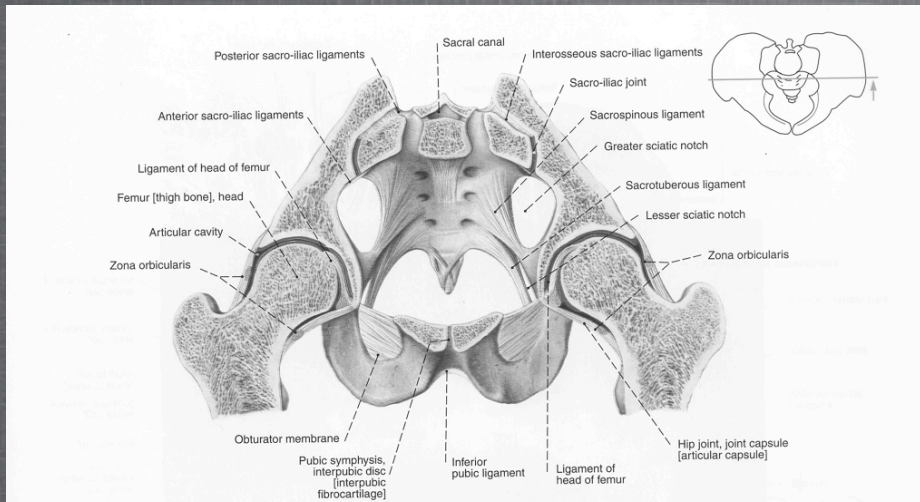


Fig. 1178 Joints of pelvic girdle in the female; frontal section at level of middle of acetabulum; anterior aspect (30%).

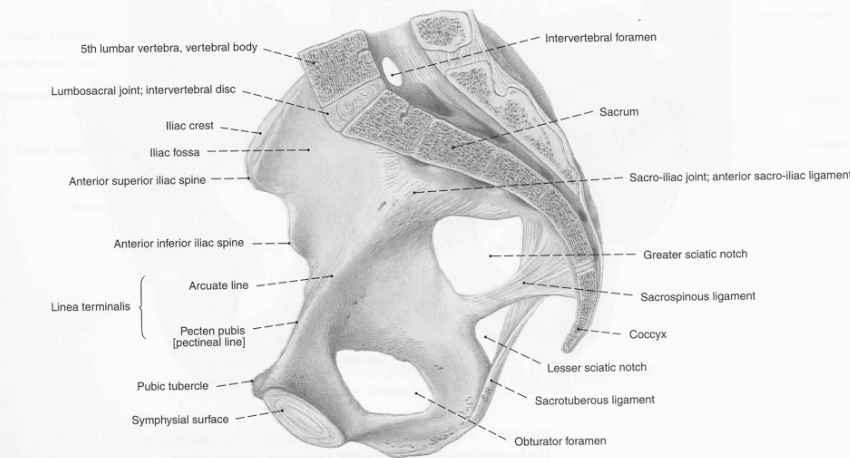


Fig. 1179 Joints of pelvic girdle and lumbosacral joint in the female; median section; medial aspect (35%). Normally, the anterior border of the lowest intervertebral disc

forms the most ventral point of the posterior circumference of the pelvic inlet. In radiographs the most ventral point of the sacrum is called promontory.

## ● Hip Joint

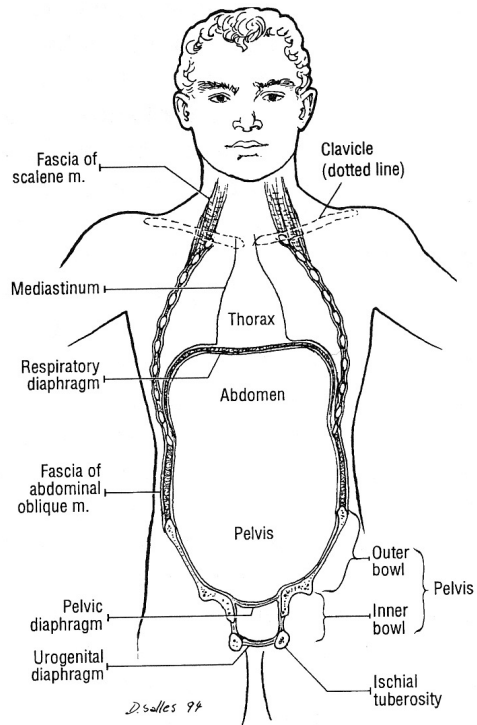
Acetabulum

Femoral Head

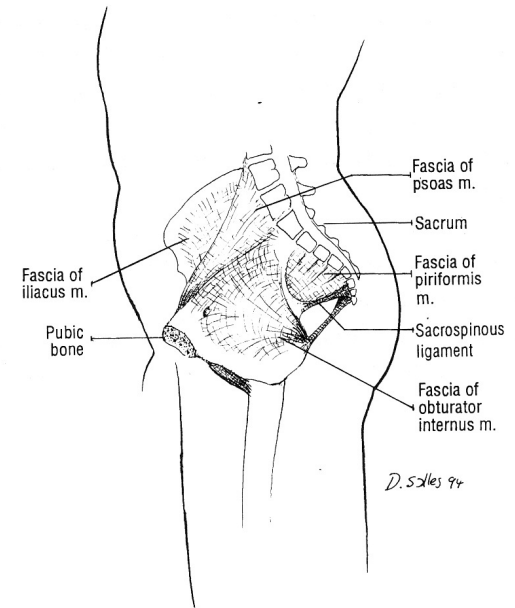
● madelineBLACK

Workshops - CEC Provider [www.Madelineblack.us](http://www.Madelineblack.us)

# ● Fascia



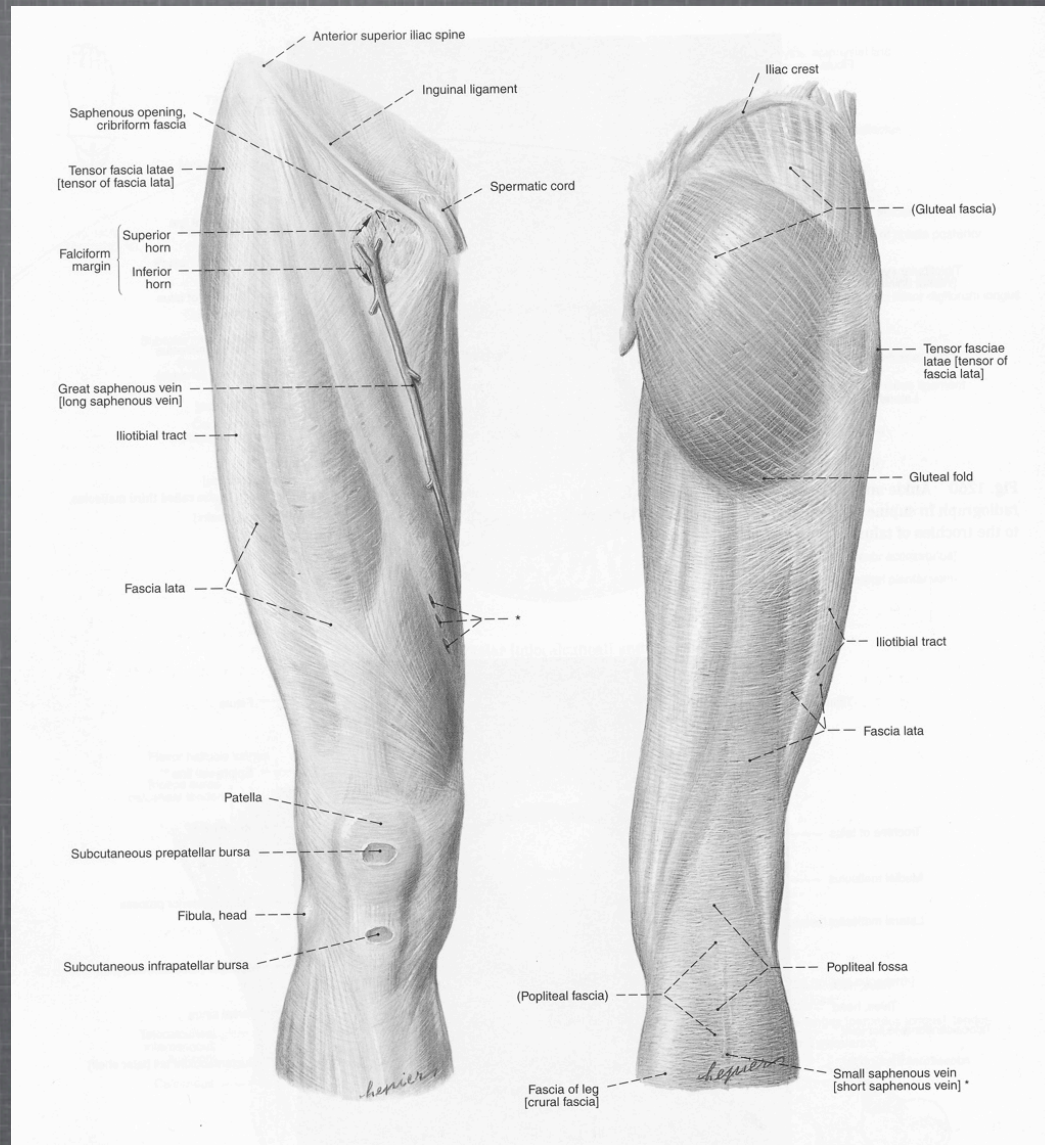
**Figure 20-1**  
The connective tissue establishes the spaces of the body.



**Figure 19-9**  
Note the relation of the fascia of the obturator internus to the deep pelvic fascia.

● Fascia

# Hip Fascia



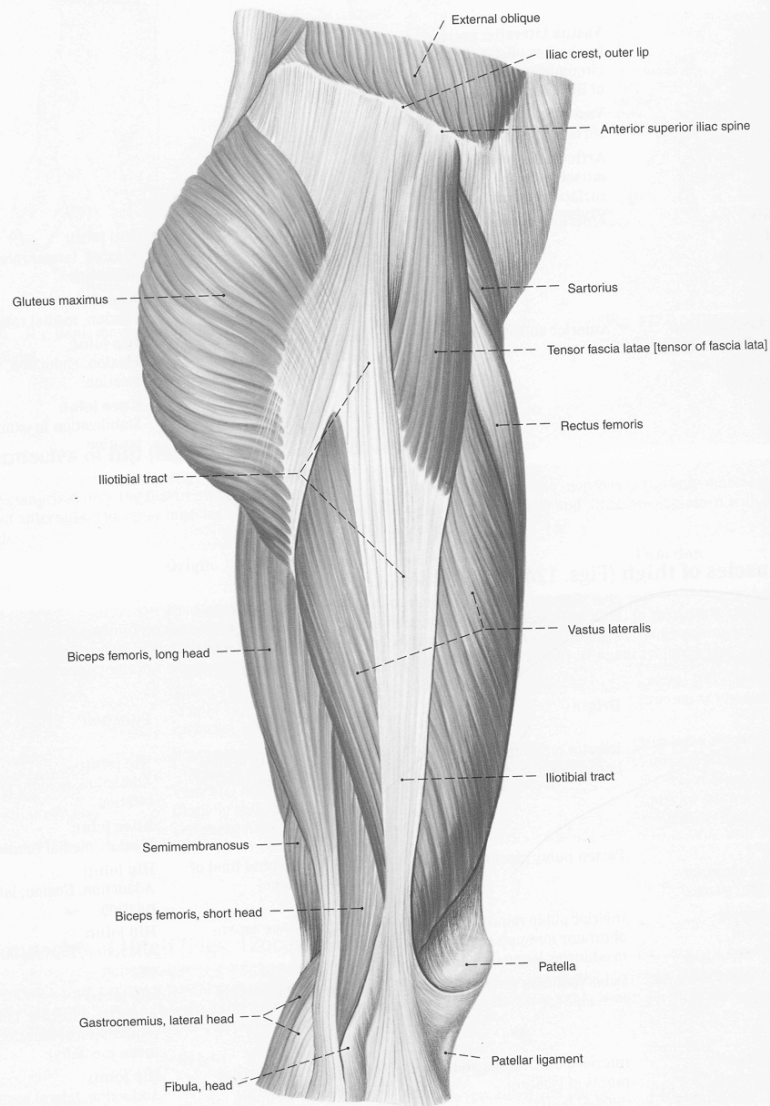


Fig. 1273 Muscles of right thigh and hip; fascia lata removed except for iliotibial tract; lateral aspect.

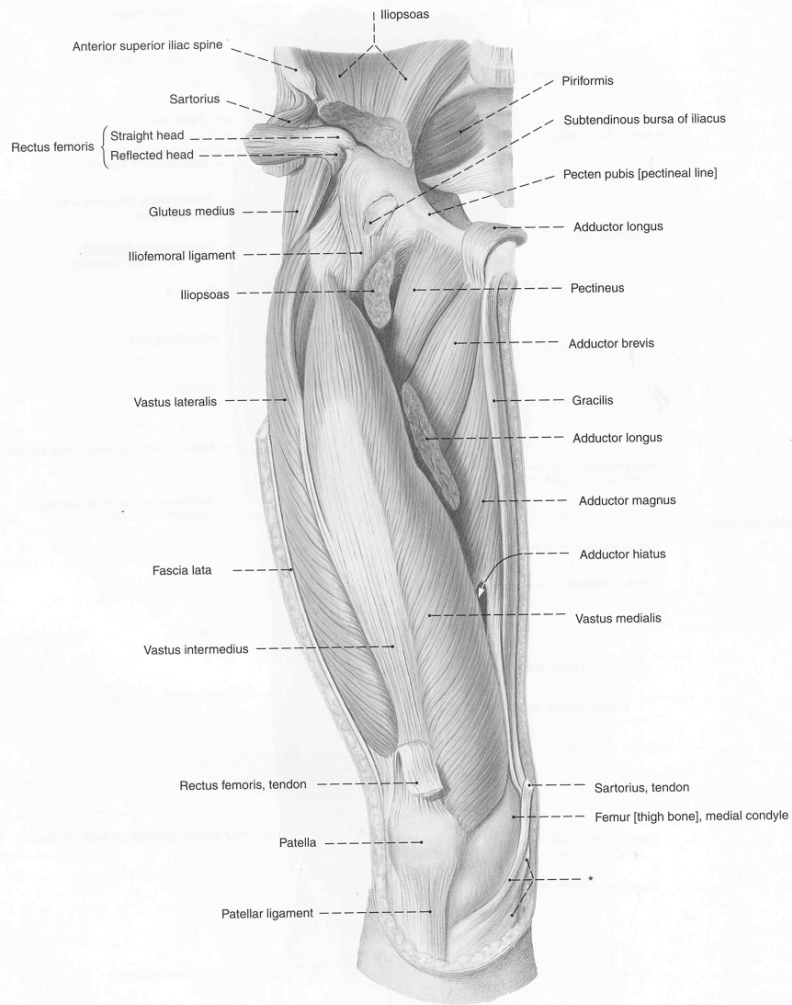
## ● Posterior Hip Muscles

## Superficial Hip Muscles

● madelineBLACK

Workshops - CEC Provider

[www.Madelineblack.us](http://www.Madelineblack.us)



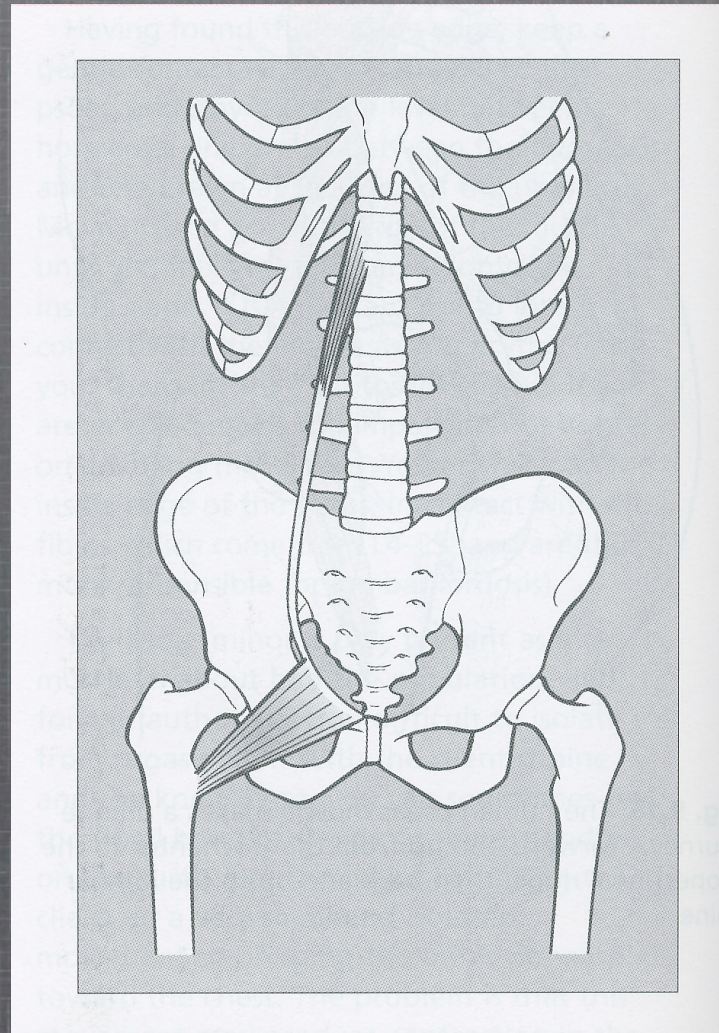
## ● Anterior/Medial Muscles

● madelineBLACK

Workshops - CEC Provider

[www.Madelineblack.us](http://www.Madelineblack.us)

- **Medial Line of Psoas and Pectineus**



m a d e l i n e B L A C K

Workshops - CEC Provider

[www.Madelineblack.us](http://www.Madelineblack.us)



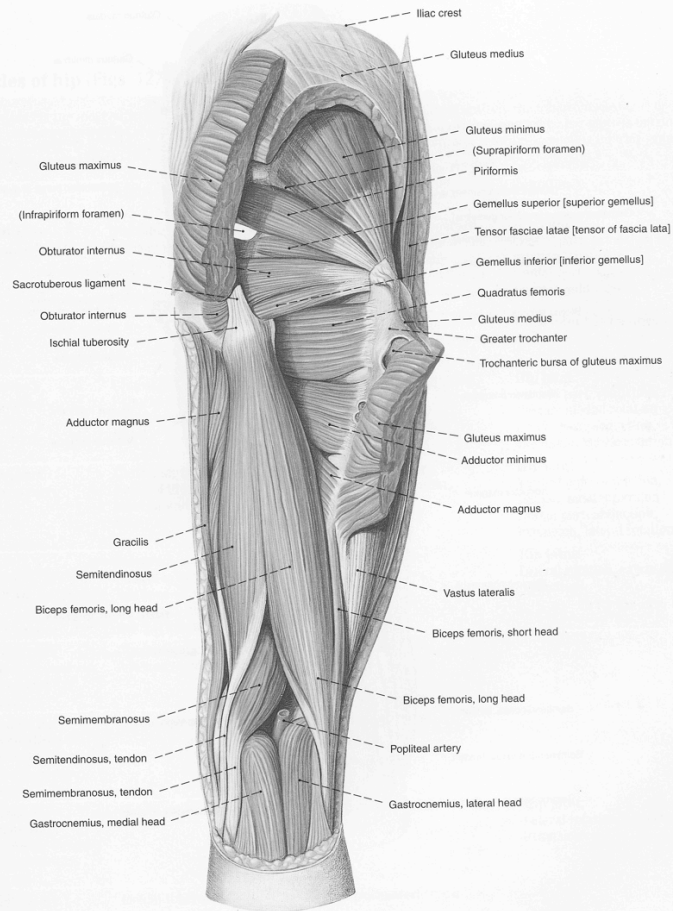


Fig. 1277 Muscles of right thigh and hip; gluteus maximus and medius partially removed; posterior aspect.

## ● Posterior Hip Muscles

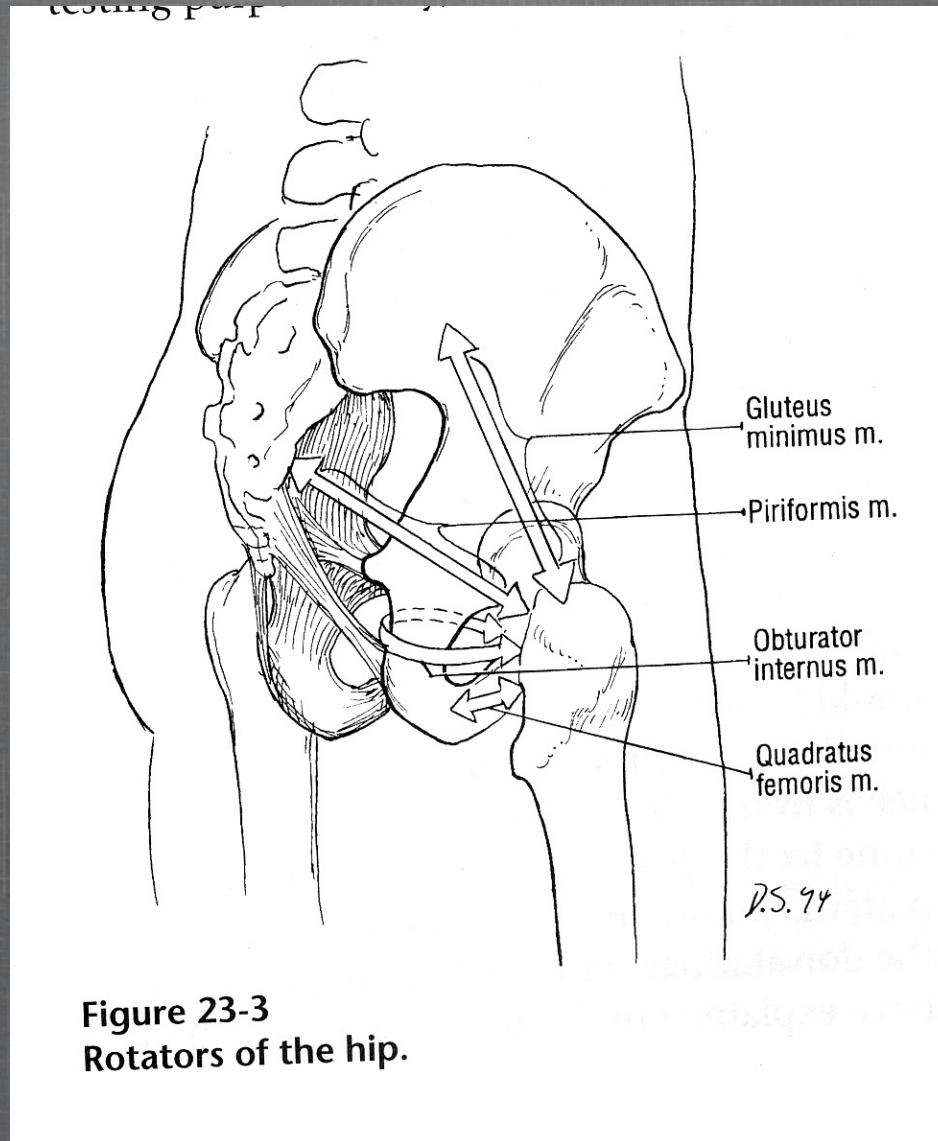
## Deep Hip Muscles

● madelineBLACK

Workshops - CEC Provider

[www.Madelineblack.us](http://www.Madelineblack.us)

- **Lateral Rotators**



**Figure 23-3**  
**Rotators of the hip.**

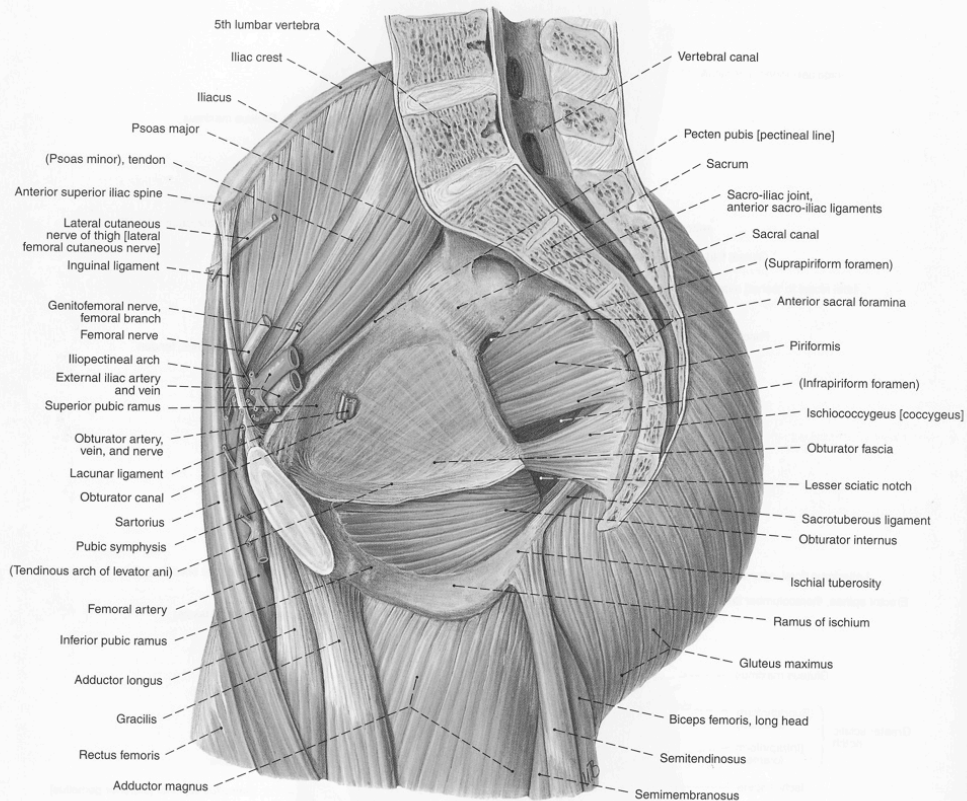


Fig. 1276 Muscles of right thigh and hip; pelvis and lumbar vertebral column sectioned in the median plane; medial aspect.

## ● Deep Hip Muscles

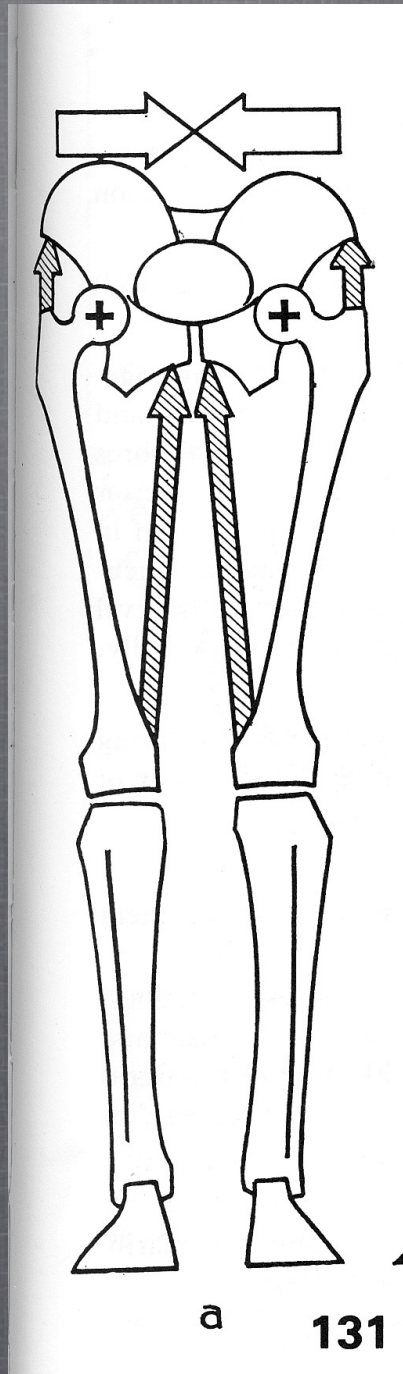
# Medial View

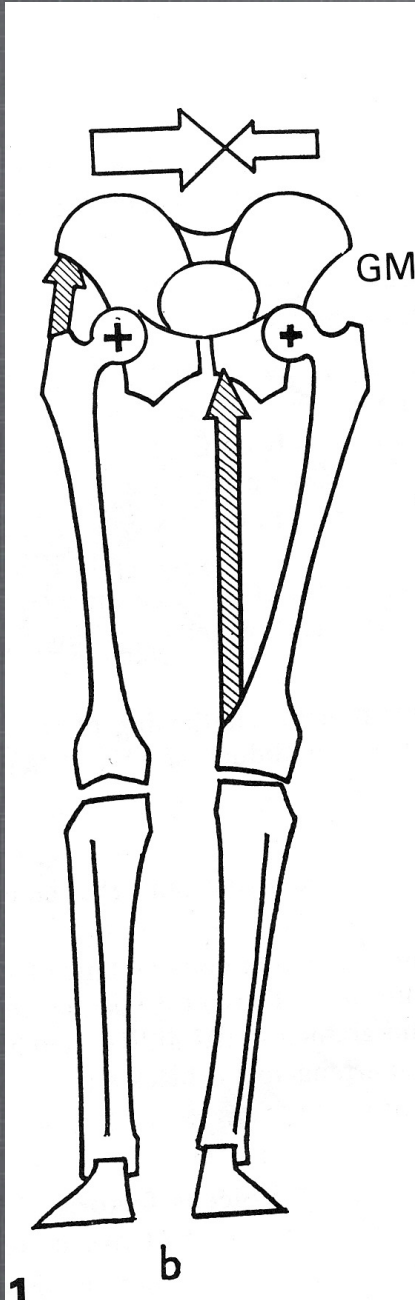
● madelineBLACK

Workshops - CEC Provider

[www.Madelineblack.us](http://www.Madelineblack.us)

- **Balanced  
Femoral Heads  
and Pelvis**





Text ● **Imbalanced:  
Shifted to left**

**Restriction:**  
**Right Lateral Glide**  
**Left Medial Glide**

● m a d e l i n e B L A C K

Workshops - CEC Provider

[www.Madelineblack.us](http://www.Madelineblack.us)

- **Movements of the Hip**

**3 axes**

**3 degrees of freedom**

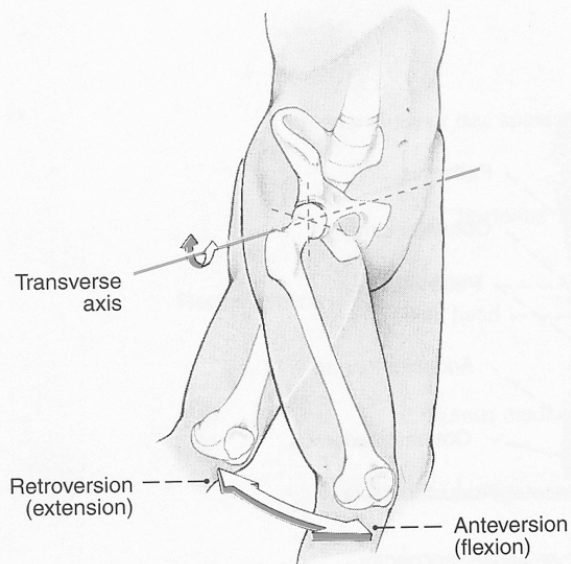


Fig. 1270 Hip joint; movement in the sagittal plane.

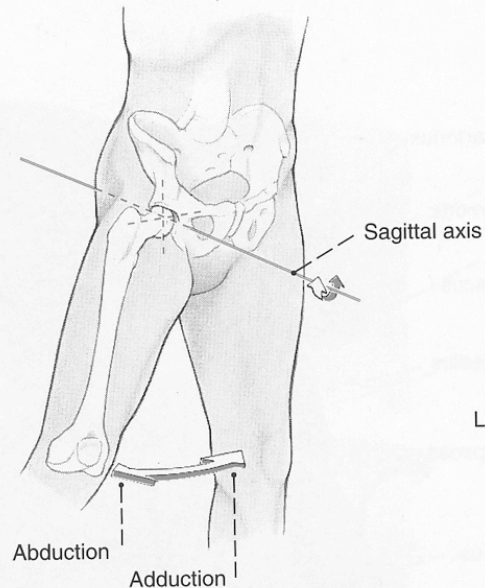


Fig. 1271 Hip joint; movement in the frontal plane.

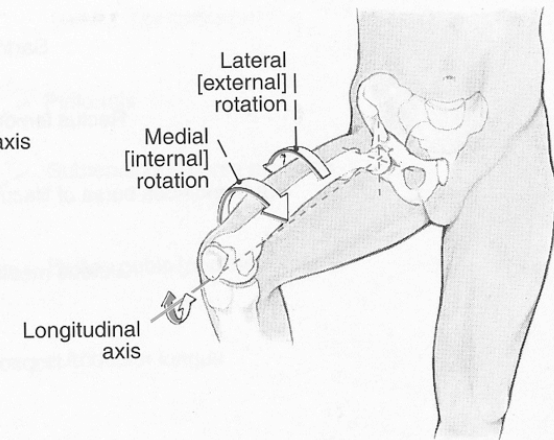
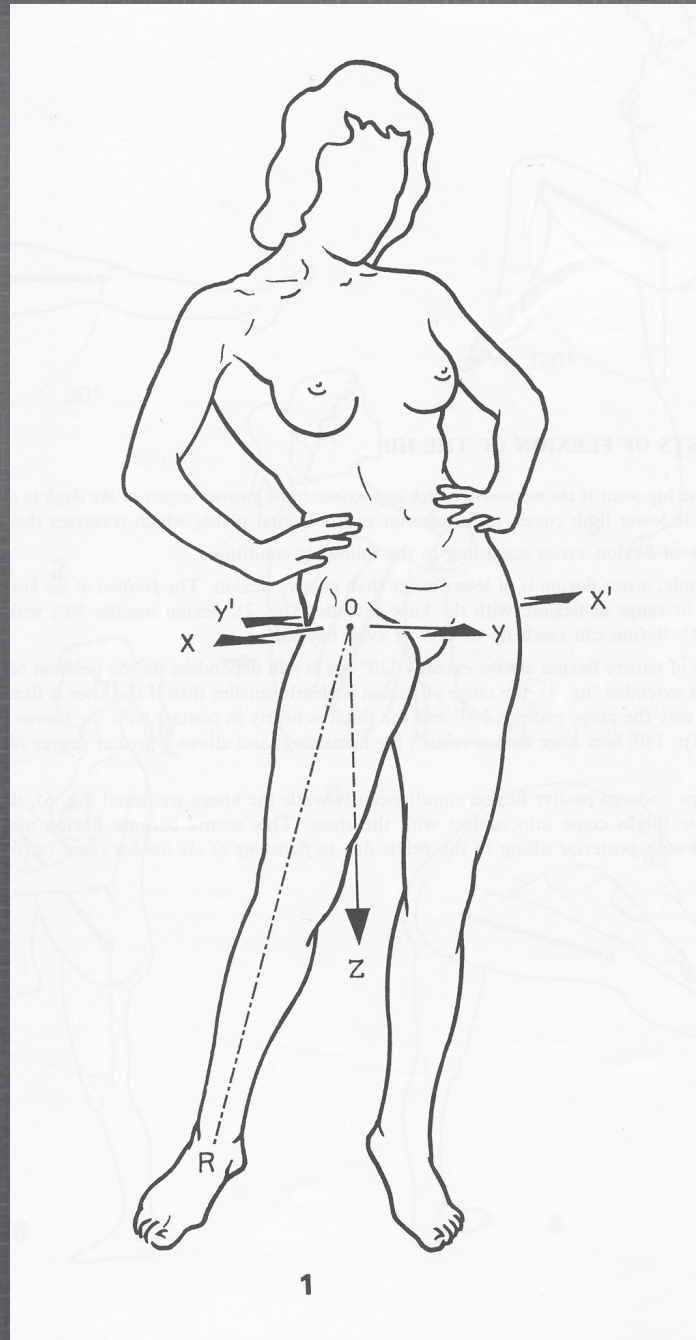


Fig. 1272 Hip joint; movement in the transverse plane.

- **Hip Axis**

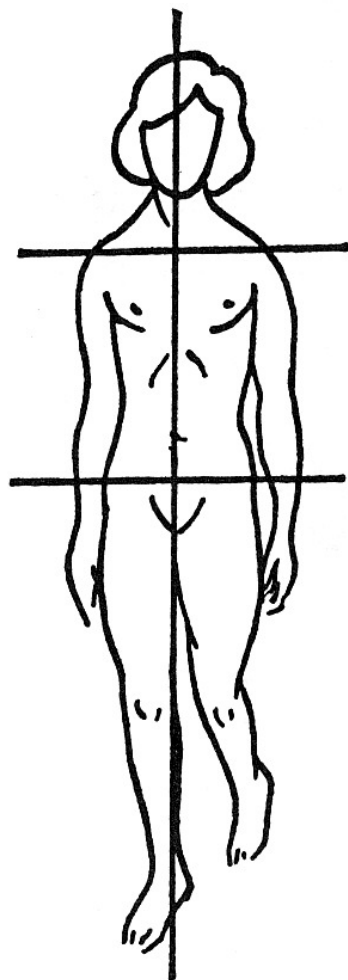
**A-P Glide**  
Anterior-Posterior



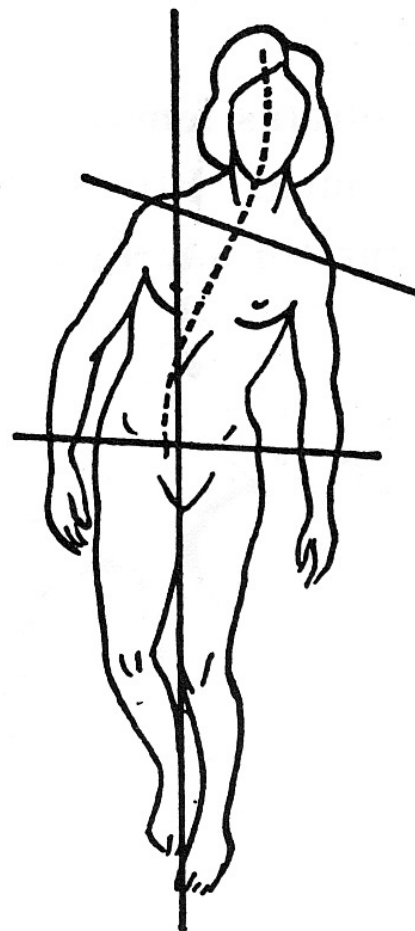
**Medial-Lateral Glide**

- Stability in Gait

Hip Stabilizing



Hip Unsupported





thank you!



m a d e l i n e B L A C K

Workshops - CEC Provider

[www.Madelineblack.us](http://www.Madelineblack.us)